

Lightsource Test Report

Product Infomation

Product Category: MODULE Street Light 50W
 Product Spec: 4000K

Product Type: 4868-4
 Product Number: 150

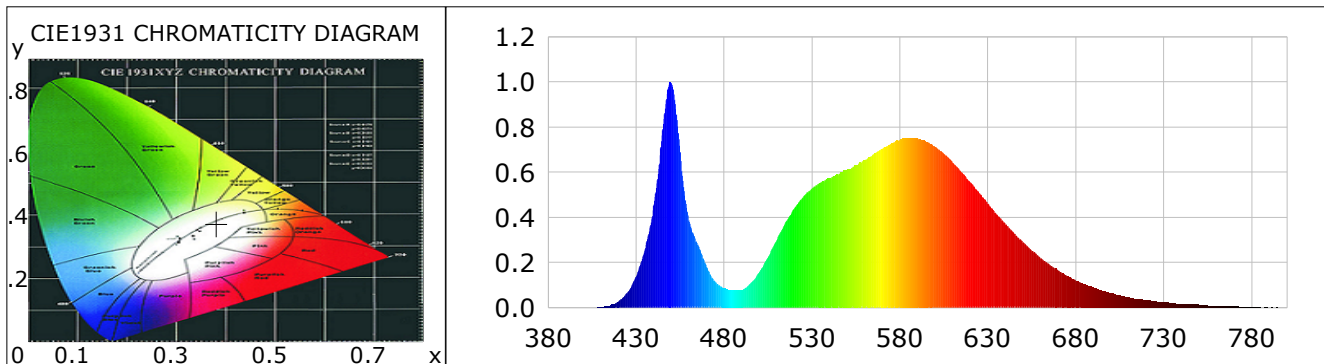
CIE Colorimetric Parameters

Chromaticity coordinates: $x=0.3806$ $y=0.3746$ $u(u')=0.2261$ $v=0.3338$ $v'=0.5007$
 CCT: $T_c=3979K$ ($duv=-0.00105$) Color Ratio: $R=0.169$ $G=0.808$ $B=0.023$
 Peak Wavelength: 449.5nm Half Bandwidth: 16.9nm
 Dominant Wavelength: 579.7nm Color Purity: 0.267
 CRI: $R_a=71.5$ TM30: $R_f=72$, $R_g=94$

R1 =69	R2 =79	R3 =85	R4 =70	R5 =68	R6 =69	R7 =80	R8 =51
R9 =-32	R10=48	R11=66	R12=38	R13=71	R14=91	R15=63	

Color Quality Scale: $Q_a=70.9$, $Q_f=70.3$, $Q_p=73.2$, $Q_g=90.5$

Q1 =75	Q2 =96	Q3 =63	Q4 =58	Q5 =68	Q6 =70	Q7 =73	Q8 =82
Q9 =93	Q10=76	Q11=71	Q12=71	Q13=73	Q14=59	Q15=65	



Photometric Parameters

Luminous Flux: 8339.54 lm
 EEI: 0.08

Efficiency: 167.43 lm/W
 Energy Efficiency Class: A++ (EU 874-2012)

Radiant Power: 23.775 W

Electric Parameters

Voltage: 230.40V
 Power Factor: 0.9620

Current: 0.2250A
 Frequency: 49.99Hz

Power: 49.81W

Test Infomation

Scan Range: 380~800:1nm
 Stabilization Time: 0 ms
 Max of Signal: 48745 (2652)

Photometric Method: sphere-spectroradiometer
 Photometric Condition: Sphere diameter: 1.50m, 4T
 CCD Integration Time: 34.80 ms

Condition: Tx:28.4'C, Ti:27.3'C, R.H.:60%
 Test Lab:
 Operator:

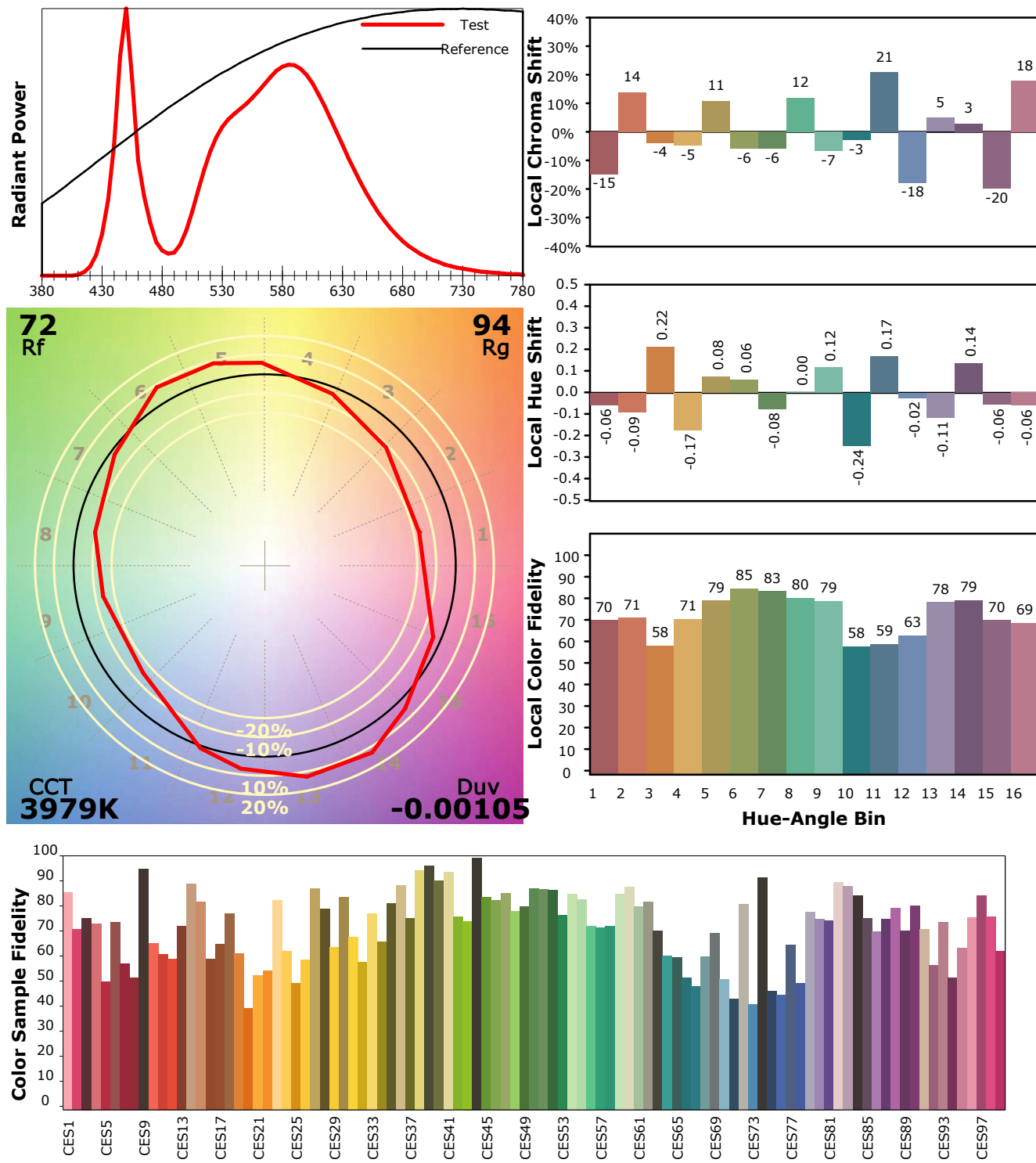
Test Device: Inventfine CMS-2S (Plus)
 Test Time: 2020-06-06 13:50:39
 Inspector:

IES TM-30-18 Color Rendition Report

Product Information

Product Category: Module 50w
Product Spec: KK5C

Product Type: 4876-4K
Product Number: 150



Condition: Tx:28.4°C, Ti:27.3°C, R.H.:60%
Test Lab:
Operator:

Test Device: Inventfine CMS-2S (Plus)
Test Time: 2020-06-06 13:50:39
Inspector: