

Lightsource Test Report

Product Infomation

Product Category: MODULE Street Light 50W Product Type: 4868-6
 Product Spec: 3000K Product Number: 151

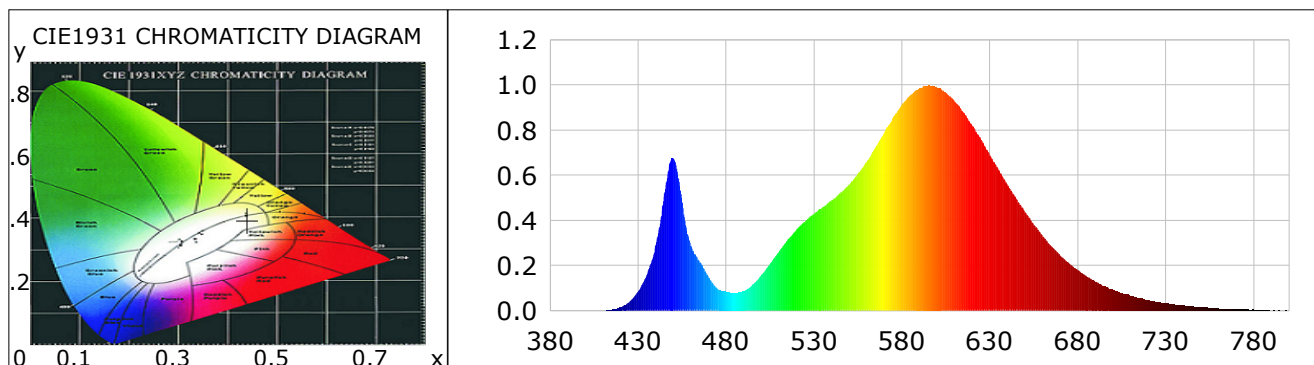
CIE Colorimetric Parameters

Chromaticity coordinates: $x=0.4399$ $y=0.3954$ $u(u')=0.2563$ $v=0.3456$ $v'=0.5184$
 CCT: $T_c=2878K$ ($duv=-0.00387$) Color Ratio: $R=0.221$ $G=0.761$ $B=0.017$
 Peak Wavelength: 595.2nm Half Bandwidth: 103.5nm
 Dominant Wavelength: 584.8nm Color Purity: 0.507
 CRI: $R_a=70.8$ TM30: $R_f=72$, $R_g=95$

R1 =67	R2 =83	R3 =94	R4 =65	R5 =67	R6 =77	R7 =74	R8 =39
R9 =-37	R10=61	R11=60	R12=51	R13=70	R14=97	R15=60	

Color Quality Scale: $Q_a=69.9$, $Q_f=70.0$, $Q_p=75.1$, $Q_g=90.2$

Q1 =67	Q2 =96	Q3 =68	Q4 =63	Q5 =69	Q6 =69	Q7 =68	Q8 =74
Q9 =94	Q10=79	Q11=73	Q12=69	Q13=70	Q14=58	Q15=61	



Photometric Parameters

Luminous Flux: 7821.85 lm Efficiency: 156.69 lm/W Radiant Power: 22.275 W
 EEI: 0.09 Energy Efficiency Class: A++ (EU 874-2012)

Electric Parameters

Voltage: 230.40V Current: 0.2250A Power: 49.92W
 Power Factor: 0.9630 Frequency: 49.99Hz

Test Infomation

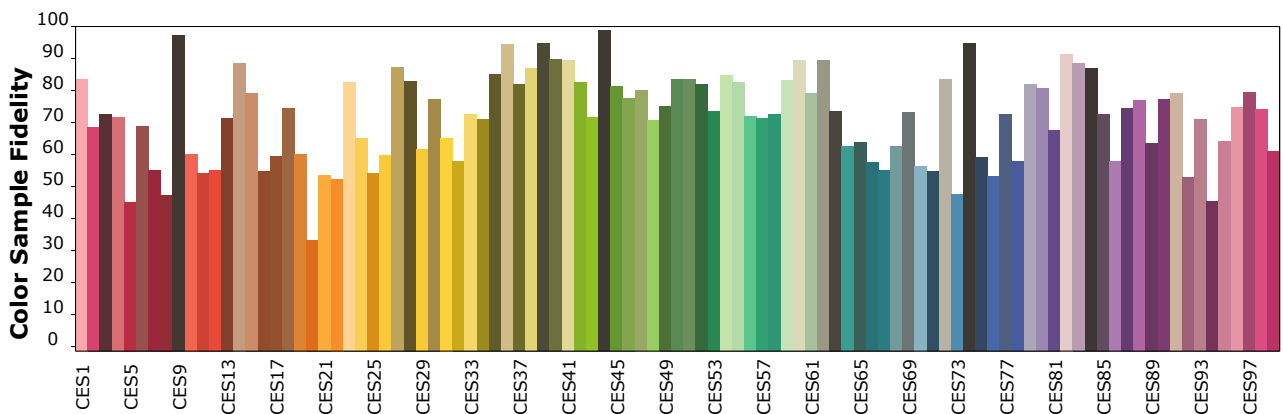
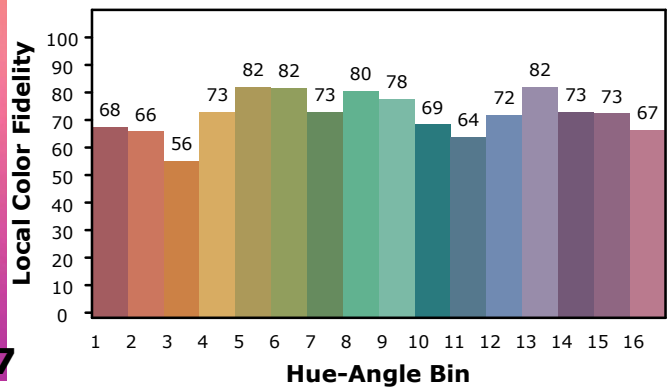
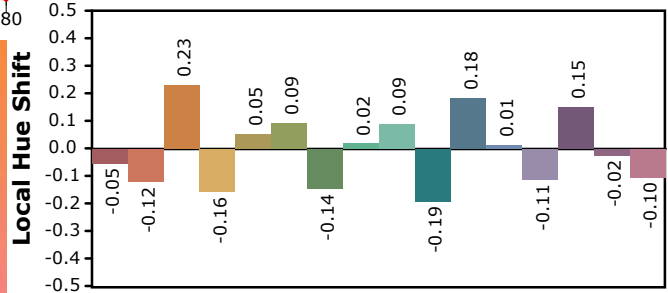
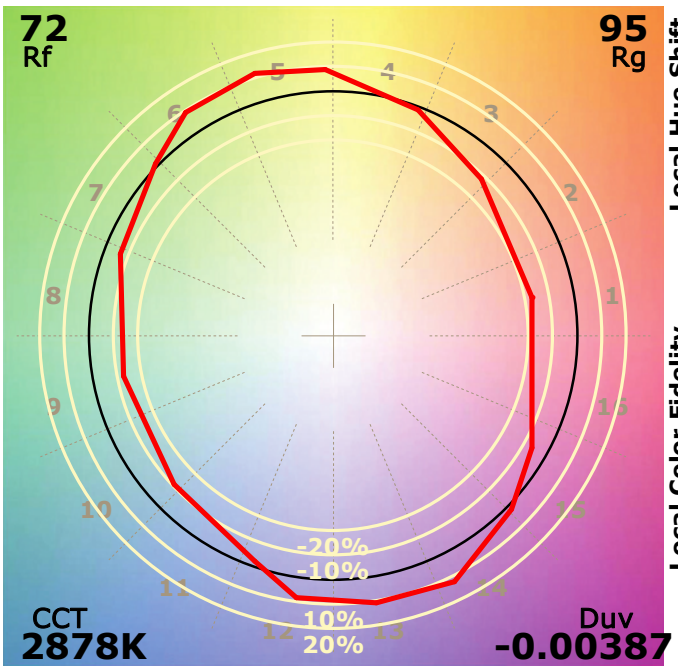
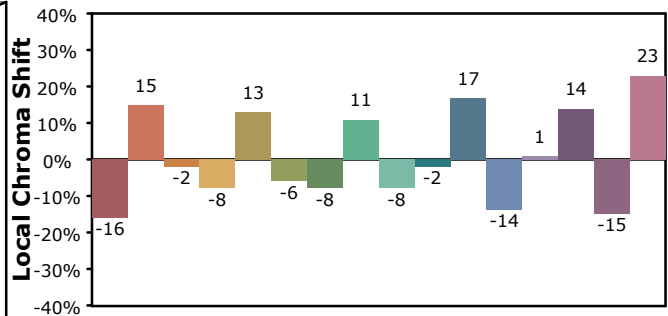
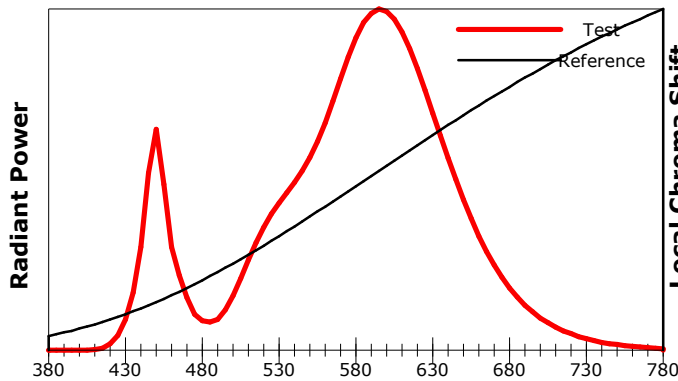
Scan Range: 380~800:1nm	Photometric Method: sphere-spectroradiometer
Stabilization Time: 0 ms	Photometric Condition: Sphere diameter: 1.50m, 4T
Max of Signal: 46643 (2663)	CCD Integration Time: 43.00 ms

IES TM-30-18 Color Rendition Report

Product Information

Product Category: MODULE 50W
 Product Spec: KK5C

Product Type: 4876-3K
 Product Number: 151



Condition: Tx:28.5°C, Ti:27.3°C, R.H.:60%
 Test Lab:
 Operator:

Test Device: Inventfine CMS-2S (Plus)
 Test Time: 2020-06-06 13:55:30
 Inspector: