

## Lightsource Test Report

### Product Infomation

Product Category: LED BX Series  
 Product Spec: KK5C

Product Type: 4868-6  
 Product Number: 129

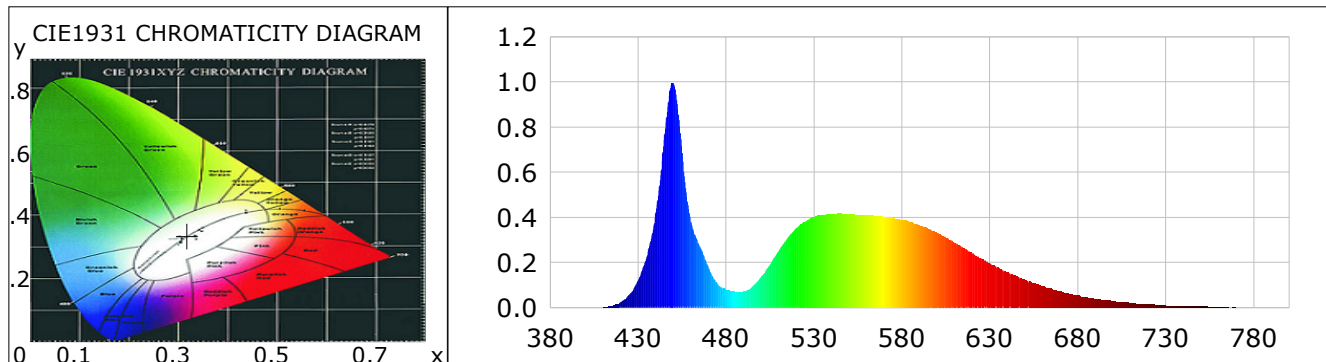
### CIE Colorimetric Parameters

Chromaticity coordinates:  $x=0.3179$   $y=0.3354$   $u(u')=0.1990$   $v=0.3150$   $v'=0.4725$   
 CCT:  $T_c=6196K$  ( $duv=0.00388$ ) Color Ratio:  $R=0.124$   $G=0.840$   $B=0.036$   
 Peak Wavelength: 449.6nm Half Bandwidth: 16.2nm  
 Dominant Wavelength: 493.4nm Color Purity: 0.051  
 CRI:  $R_a=71.9$  TM30:  $R_f=72$ ,  $R_g=93$

R1 =70	R2 =75	R3 =78	R4 =73	R5 =71	R6 =66	R7 =82	R8 =60
R9 =-31	R10=40	R11=70	R12=37	R13=71	R14=87	R15=66	

Color Quality Scale:  $Q_a=70.6$ ,  $Q_f=69.5$ ,  $Q_p=73.7$ ,  $Q_g=89.2$

Q1 =81	Q2 =94	Q3 =62	Q4 =55	Q5 =67	Q6 =72	Q7 =77	Q8 =85
Q9 =89	Q10=72	Q11=67	Q12=69	Q13=72	Q14=58	Q15=67	



### Photometric Parameters

Luminous Flux: 8631.79 lm  
 EEI: 0.07

Efficiency: 188.18 lm/W  
 Energy Efficiency Class: A++ (EU 874-2012)

Radiant Power: 26.099 W

### Electric Parameters

Voltage: 230.40V  
 Power Factor: 0.9800

Current: 0.2030A  
 Frequency: 49.99Hz

Power: 45.87W

### Test Infomation

Scan Range: 380~800:1nm  
 Stabilization Time: 0 ms  
 Max of Signal: 47716 (2442)

Photometric Method: sphere-spectroradiometer  
 Photometric Condition: Sphere diameter: 1.50m, 4T  
 CCD Integration Time: 23.97 ms

Condition:  $T_x=24.6^{\circ}C$ ,  $T_i=22.8^{\circ}C$ , R.H.:60%  
 Test Lab:  
 Operator:

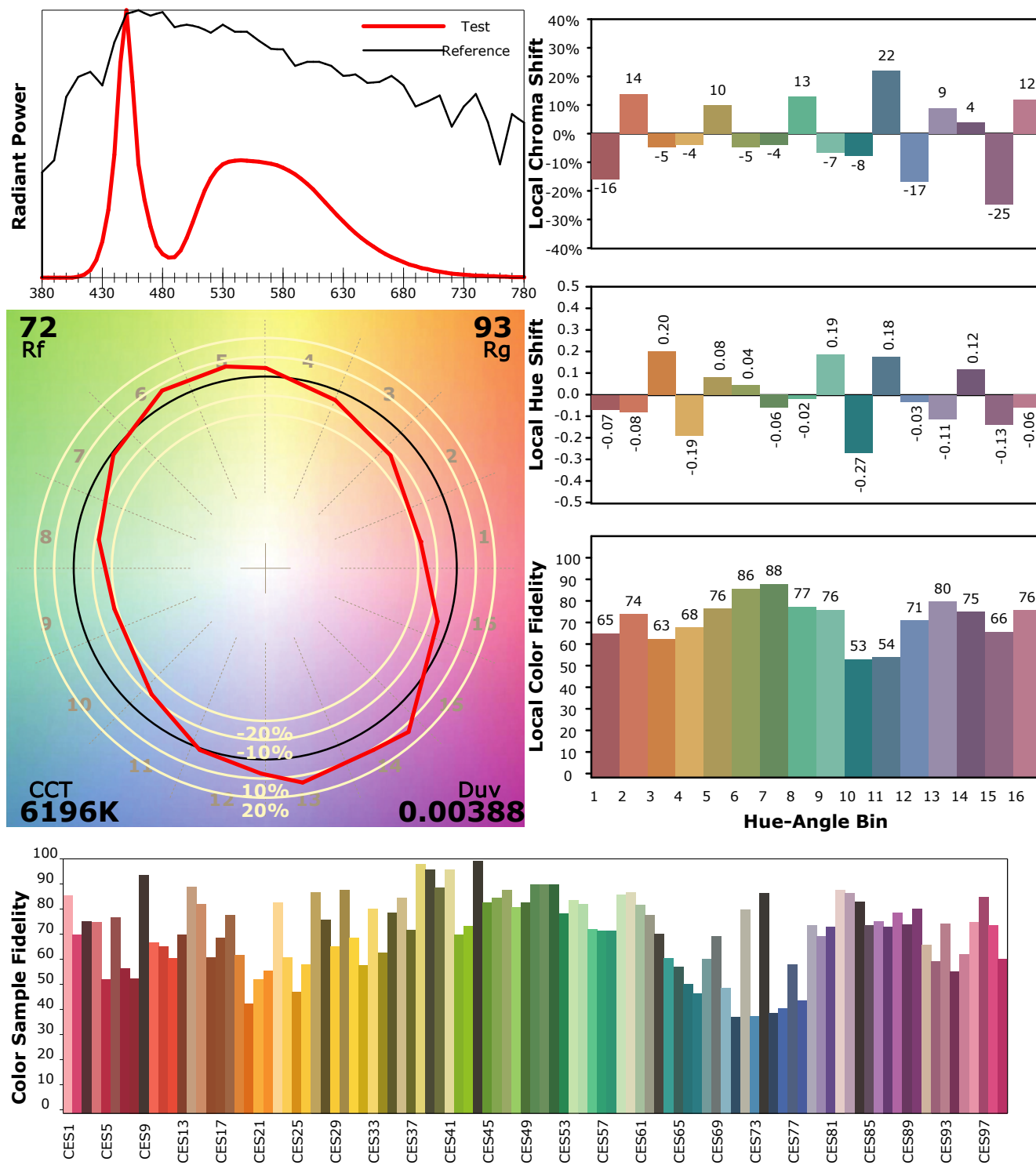
Test Device: Inventfine CMS-2S (Plus)  
 Test Time: 2020-04-15 15:45:10  
 Inspector:

## IES TM-30-18 Color Rendition Report

### Product Information

Product Category: LED BX Series  
Product Spec: KK5C

Product Type: 4868-6  
Product Number: 129



Condition: Tx:24.6°C, Ti:22.8°C, R.H.:60%  
Test Lab:  
Operator:

Test Device: Inventfine CMS-2S (Plus)  
Test Time: 2020-04-15 15:45:10  
Inspector: